

# Parallel Parking Tip Sheet

Signal, Mirrors, Over Shoulder, Go when safe

Points of Reference that you will use :

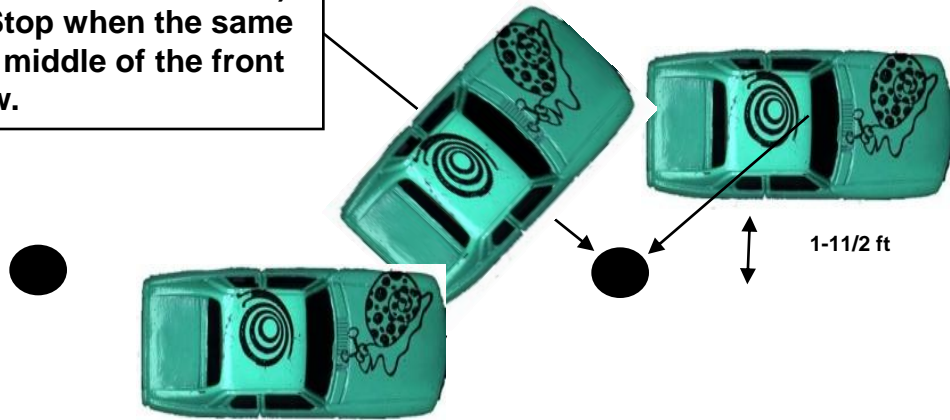
- Passenger side rear window
- Passenger side front window

**A**

**SMOG** as you approach and keep approx. 1 to 1 ½ feet between the car and the front pole. Stop when front pole is about ¾ of the way in the rear passenger window.

**B**

Turn the wheel all the way to the right. (do not let the wheel turn back). Slowly back and Stop when the same pole is now in the middle of the front passenger window.



763.525.4052

[www.mytwheels.com](http://www.mytwheels.com)



**DOGWATCH**  
TRAFFIC SAFETY  
SURVEILLANCE

**HOW AM I DRIVING?**  
**REPORT RECKLESS**  
**BEHAVIOR**

1-800-\*\*\*-\*\*\*\*

[TrafficDogWatch.com](http://TrafficDogWatch.com)

Turn on your 4-way  
flashers(hazard  
lights)

7 ft

**C**

Turn the wheel all the way to the left. Slowly back until you are parallel to the curb. Straighten the wheel. Center between the front and back poles.

Leaving: Back up to get good clearance from the front pole. SMOG. Pull out if clear

25 ft

# 90 Degree Corner Back Up

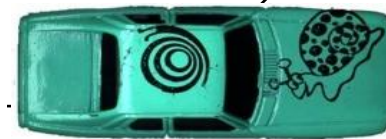
Points of Reference that you will use:

- Passenger side front window
- Passenger side rear window

**B** Turn the wheels all the way to the right. Slowly back up and stop when you are parallel to the white parking lines and perpendicular to the poles.

**A** SMOG as you approach and Keep approx. 6-8 ft away from the poles. Stop when the front pole is in the very back part of the rear passenger window. Turn on your hazard lights.

Turn on your 4-way flashers(hazard lights)



6-8 ft away

**C** Straighten your wheels and continue backing. Stop when your front bumper is even with the front poles. Put Car in park and turn off hazard lights.



12 ft

10 ft

763.525.4052  
www.mytwheels.com



**DOGWATCH**  
TRAFFIC SAFETY  
SURVEILLANCE

**HOW AM I DRIVING?  
REPORT RECKLESS  
BEHAVIOR**

1-800-\*\*\*-\*\*\*\*

TrafficDogWatch.com